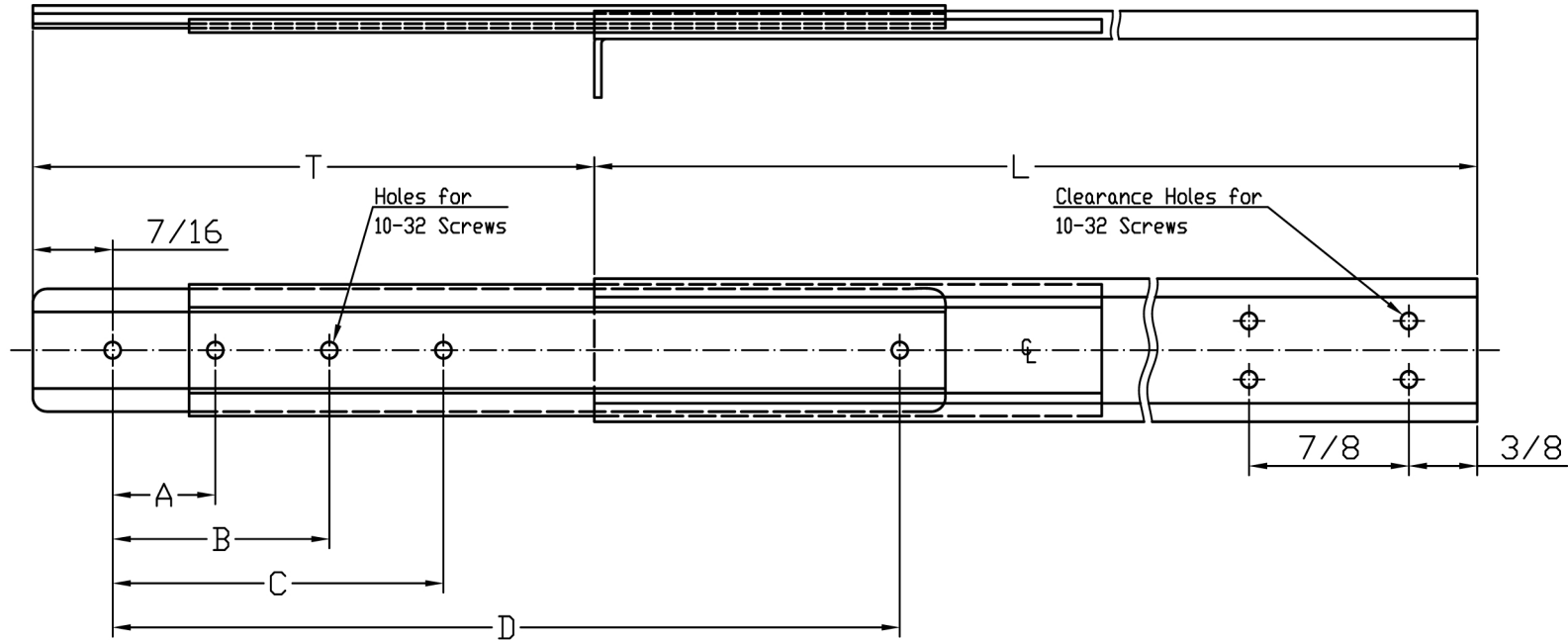
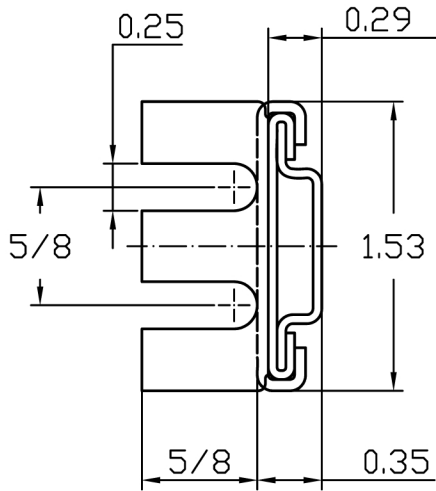


Model: EST



Custom & Precision Drawer Slides
 2074 Aerotech Dr.
 Colorado Springs, CO 80916
 (719)-390-6585

SLIM TRACK 3-SECTION SOLID BEARING STEEL SLIDE



NOTES:

Solid Bearing, Superior Performance Against High Shock and Vibration.

1. LOAD CAPACITY: Up to 75 lbs.*
2. MATERIAL: Prime hard cold Rolled Steel. All Parts Built to Military Specifications
3. LUBRICANT: Built in Permanent Dry Lubricant, Never Needs Oiling. Dry Lubricant, Baked on at 400° per Mil-L-25504, over Phosphate Coating per Mil-P-16232, Type M.
4. BRACKETS: Slides Shipped with Standard 2" Rear Mounting Brackets. If Specified, any one of the Following Size Rear Mounting Brackets will be Shipped with Slides: 4", 6", 8", 10" or 12".
5. FINISH: Molybdenum Disulphide.

SLIDE DIMENSIONS

MODEL No.	L	T	A	B	C	D
EST2-10	10	11	3.12	6.25		
EST2-12	12	13	3.75	7.50		
EST2-14	14	15	4.37	8.75		
EST2-16	16	17	5.00	10.00		
EST2-18	18	19	5.62	11.25		
EST2-20	20	21	3.125	6.250	9.375	12.500
EST2-22	22	23	3.937	7.875	11.812	15.750
EST2-24	24	25	4.437	8.875	13.312	17.750
EST2-26	26	27	4.937	9.875	14.812	19.750
EST2-28	28	29	5.437	10.875	16.312	21.750
EST2-30	30	31	5.937	11.875	17.812	23.750

Choice of Positive Locking in closed and/or extended position or Stop - Out Only which enables easy entry of Chassis into Cabinet without manipulations of Catches.

When Ordering, please specify Feature needed:

- ESBM2-20-SO (stop-out only).
- ESBM2-20-PL (positive locking).
- ESBM2-20-FD (fast disconnect).

* Load Ratings are based on a pair of 18" Slides with Standard Extension