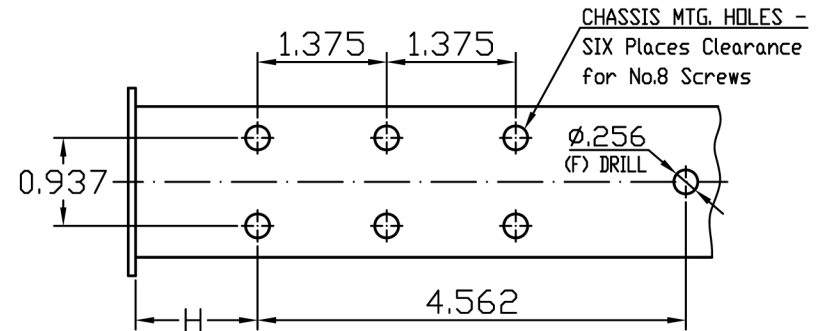
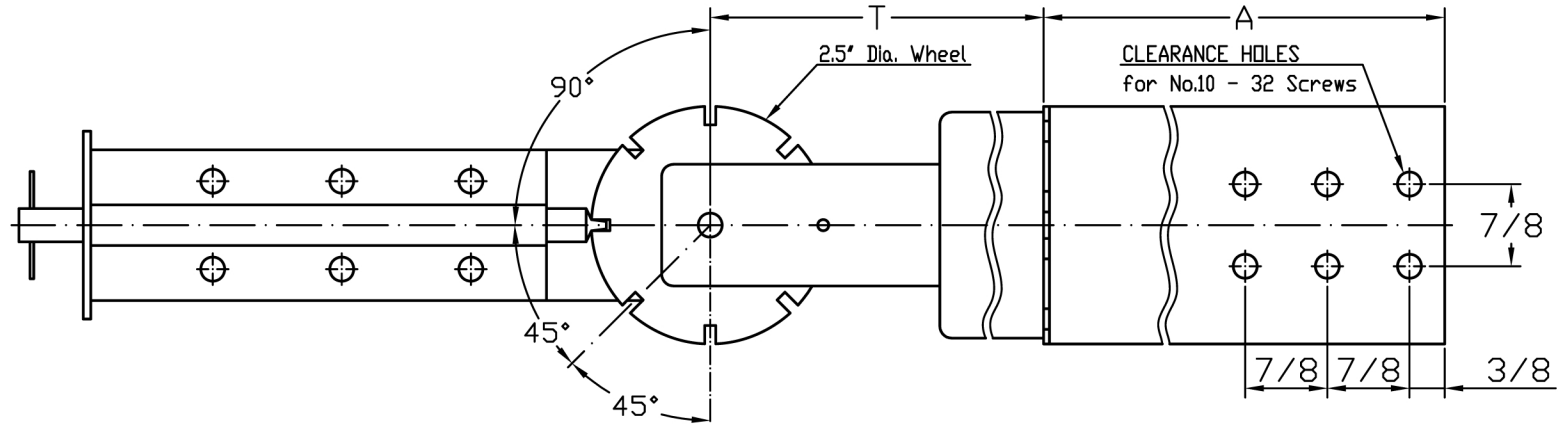
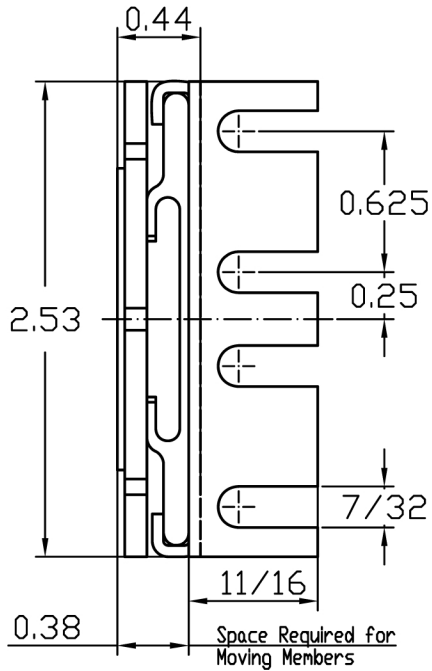


Model: ST-RT



Custom & Precision Drawer Slides
 2074 Aerotech Dr.
 Colorado Springs, CO 80916
 (719)-390-6585

SLIM TRACK SLIDE 3-SECTION "ROTO-TRACK" SOLID BEARING STEEL SLIDE-HEAVY DUTY



NOTES:

Solid Bearing, Superior Performance Against High Shock and Vibration.

- LOAD CAPACITY: Up to 125 lbs.*
- MATERIAL: Prime hard cold Rolled Steel. All Parts Built to Military Specifications
- LUBRICANT: Built in Permanent Dry Lubricant, Never Needs Oiling. Dry Lubricant, Baked on at 400° per Mil-L-25504, over Phosphate Coating per Mil-P-16232, Type M.
- BRACKETS: Slides Shipped with Standard 2" Rear Mounting Brackets. If Specified, any one of the Following Size Rear Mounting Brackets will be Shipped with Slides: 4", 6", 8", 10" or 12".
- FINISH: Molybdenum Disulphide.

SLIDE DIMENSIONS

MODEL No.	A	T	H _{min}	H _{max}
ST-RT-10	10	Check with factory	1.31	
ST-RT-12	12		1.31	
ST-RT-14	14	9.50	1.31	
ST-RT-16	16	11.50	1.31	
ST-RT-18	18	13.50	1.31	
ST-RT-20	20	15.50	1.31	
ST-RT-22	22	17.50	1.31	
ST-RT-24	24	19.50	1.31	
ST-RT-26	26	21.50	1.31	
ST-RT-28	28	23.50	1.31	
ST-RT-30	30	25.50	1.31	

* Load Ratings are based on a pair of 18" Slides with Standard Extension

Choice of Positive Locking in closed and/or extended position or Stop - Out Only which enables easy entry of Chassis into Cabinet without manipulations of Catches.

When Ordering, please specify Feature needed:
 ESBM2-20-SO (stop-out only).
 ESBM2-20-PL (positive locking).
 ESBM2-20-FD (fast disconnect).